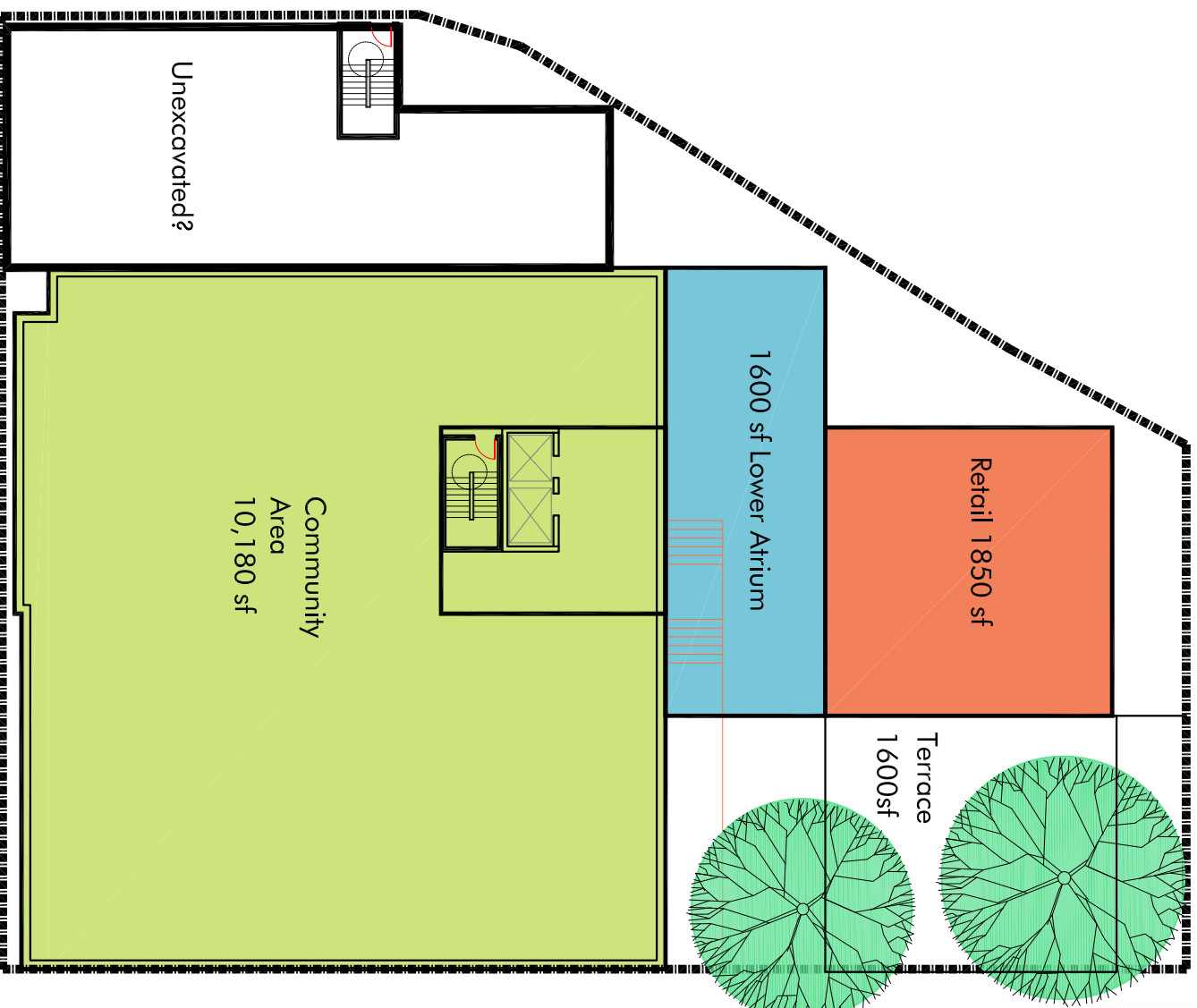


### Port Credit Post Office

Area Statistics September 15, 2009

	Atrium	Community	Retail	Office	Total GFA	Outdoor Terrace
Basement	1,600	10,180	1,850	0	13,630	1,600
1st Floor	3,900	0	10,920	930	15,750	0
2nd Floor	0	0	1,850	9,370	11,220	0
3rd Floor	0	0	0	6,500	6,500	0
Roof	0	0	1,500	0	1,500	1,950
Totals	5,500	10,180	16,120	16,800	48,600	8,450



## Basement Floor Plan



## Ground Floor Plan

Lakeshore Road East



MICHAEL SPAZIANI ARCHITECT INC  
 6 BAYVIEW STREET, SUITE 100  
 SCARBOROUGH, ONTARIO M1S 5C2  
 1-905-881-0824 / 905-881-0824

## Port Credit Post Office

Adaptive Reuse Development Proposal  
 Lakeshore Road East at Stavebank Road, Mississauga, Ontario

## Floor Plans

September 15, 2009