

# LAKE SHORE ROAD WALKING AUDIT

*Is Port Credit Walkable and Accessible?*

Presentation at TOPCA Town Hall  
**LAKE SHORE CORRIDOR: GET MOVING**

November 9, 2017

**Carol-Ann Chafe**  
Accessibility Consultant and Advocate



@C\_AChafe

# UNIVERSAL DESIGN

## What does it Mean for Lakeshore Corridor?

- Accessibility
- Age-In-Place
- VisitAbility
- Inclusion
- Employee Retention
- Increased # Customers for local stores
- Social Interaction

# SOME STATISTICS

- Statistics Canada (2012) states **13.7%** of population declare as having a disability
  - by age 45 - 64 years old, **16.1 %**
  - by age 65 - 74 years old, **33.2 %**
  - by age 75+ years old, **42.5 %**
- If your community isn't accessible, you may have to:
  - Leave your community, leaving friends and family behind
  - Quit your job, or may lose your job or your business
  - Stay at home and lose social contacts and sense of community



# ACCESSIBILITY MISSES

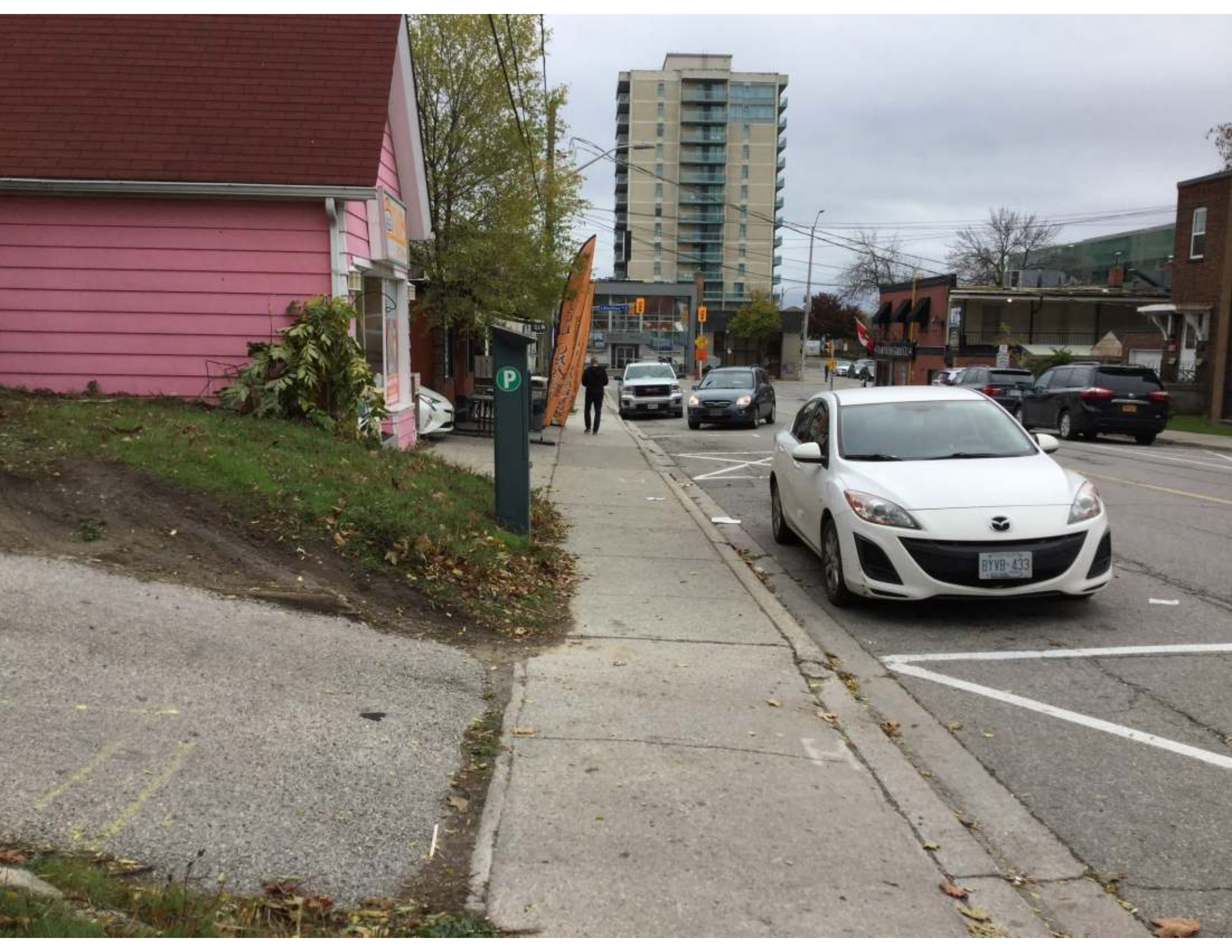
- It's not that we plan to make life difficult for others but we are not always aware how what we do can affect others so much
- You may find you will now see things a little differently, and think about how the walking experience can be improved for all
- Here are some Port Credit examples...



















SHOE REPAIR

KEYS CUT HERE











**STEP by STEP**  
Successful Safety

**STEP 1**  
Look before you cross

**STEP 2**  
Walk safely  
- Look left  
- Look right

**STEP 3**  
Walk safely  
- Use the crosswalk  
- Look left  
- Look right

**STEP 4**  
Walk safely  
- Use the crosswalk  
- Look left  
- Look right

The following information is for informational purposes only. It is not intended to be used as a legal document. For more information, please visit [www.queenscorp.com](http://www.queenscorp.com).

Hand icon pointing to a red bullseye target.

Walking person icon.

Right arrow icon.



**N**

RE

QU

**OPEN**

RN  
HOMES  
'S  
P.COM

QUEENSCORP  
RESOURCES

**OPEN HOUSE**

1 HURONTARIO #1905



**ONE WAY**

**mod**

OPEN HOUSE

1 HURONTARIO #1905









# SOME GOOD EXAMPLES

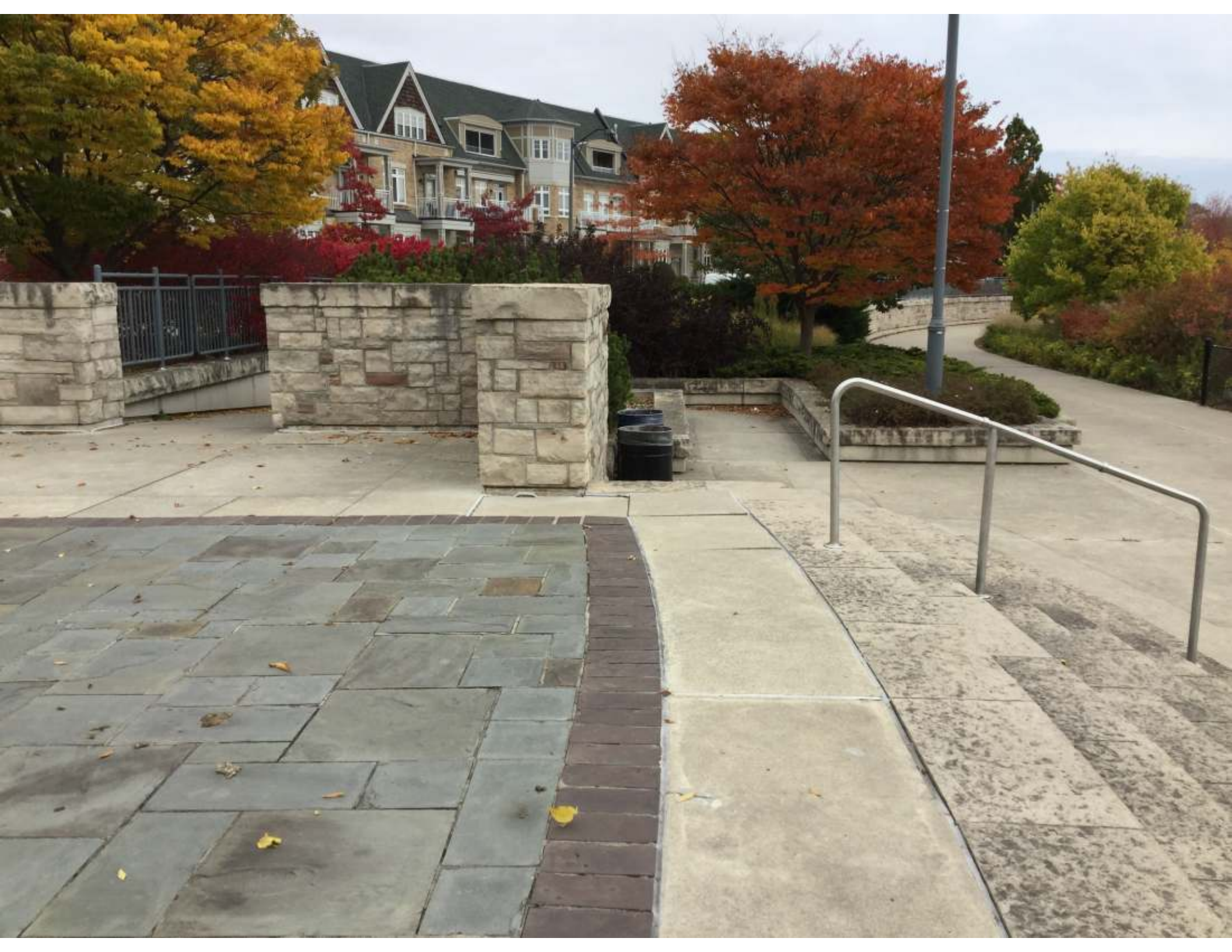
- It's not all bad news as we are seeing more and good examples of accessibility, and here are just a few in Port Credit ...



ALL-WAY



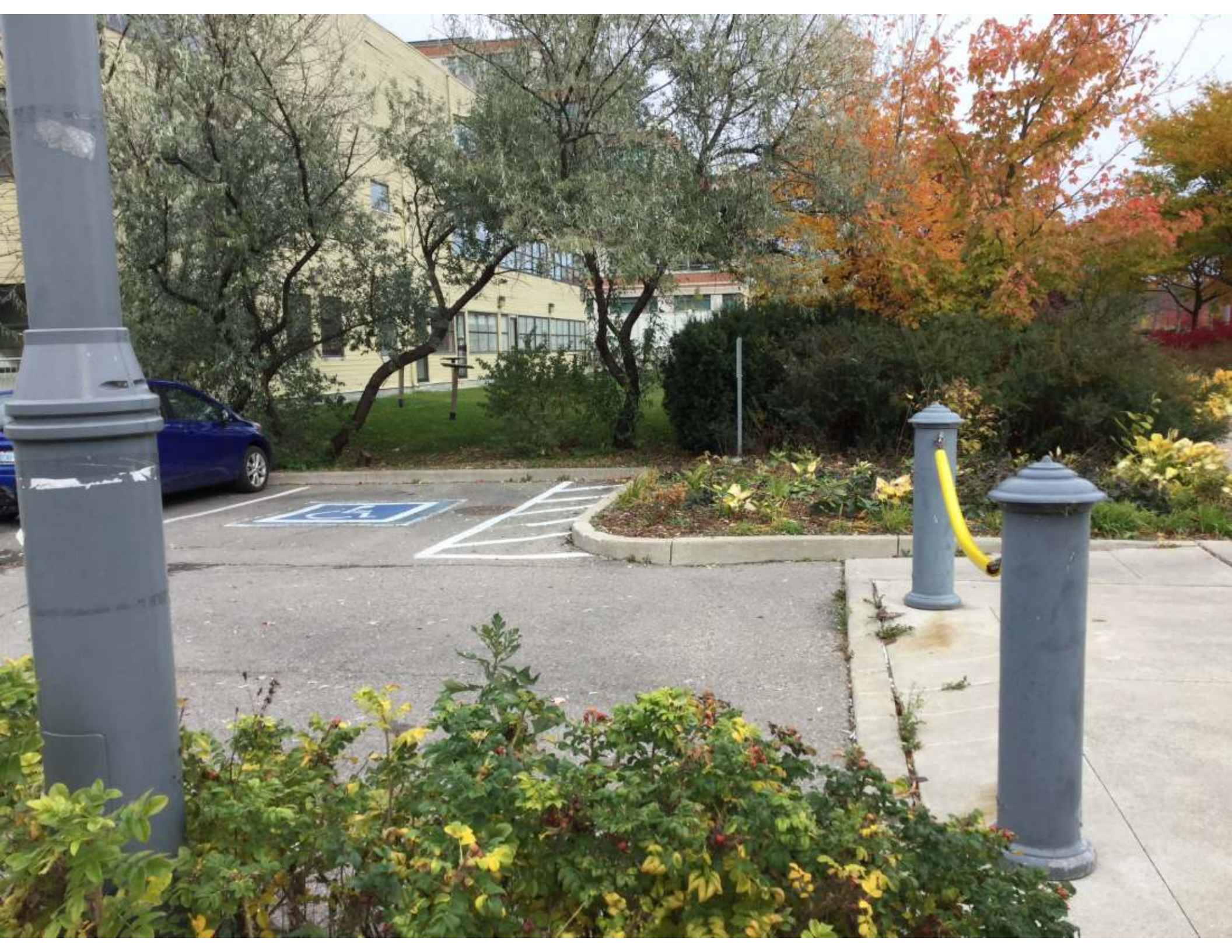
















SAGE  
open 10am-8pm  
647 847.1118

MYLASH Canada  
Lashes  
Asian  
Premium Makeup  
www.mylashcanada.com  
416.571.8800

Relaxing Up To  
Lids

PUMPKIN



# The Lakeshore Walkability Audit

*Conducted by:* Lakeshore Connecting Communities / City of Mississauga; co-hosted with Region of Peel (May 2017)

- Online (8 page PDF) at:  
[www7.mississauga.ca/Departments/Marketing/lakeshore-connecting-communities/Port-Credit-Walkability-Audit.pdf](http://www7.mississauga.ca/Departments/Marketing/lakeshore-connecting-communities/Port-Credit-Walkability-Audit.pdf)
- Take a look at the audit and open your eyes to ways to improve our mainstreet accessibility...



# TOP TEN Audit Concerns

- Not all storefronts on Lakeshore Road are accessible
- More benches and seating areas needed near destinations
- Add perpendicular wayfinding signs (e.g. washrooms)
- Install a lit-up store directory at street corners
- Uneven pavements and curbs; some very narrow and sloped
- Obstacles: garbage cans, planters, bike posts + bikes
- Protrusions: trees, traffic poles, parking metres, light posts
- Lighting in some areas could be improved
- Curb ramps are not well done in some areas
- Patios are great; unsafe for folks with certain accessibility needs



# Include Accessibility in Planning!

**Implement Universal Design wherever it can be:**

- **City of Mississauga** is an accessibility leader:  
[www.mississauga.ca/portal/residents/accessibility](http://www.mississauga.ca/portal/residents/accessibility)  
[www.mississauga.ca/portal/residents/accessibilitystandards](http://www.mississauga.ca/portal/residents/accessibilitystandards)
- **Region of Peel** accessibility:  
[www.peelregion.ca/corpserv/makingway/](http://www.peelregion.ca/corpserv/makingway/)
- **Ontario** is one of the few Canadian Provinces with Accessibility Laws (AODA):  
[www.ontario.ca/page/accessibility-laws](http://www.ontario.ca/page/accessibility-laws)